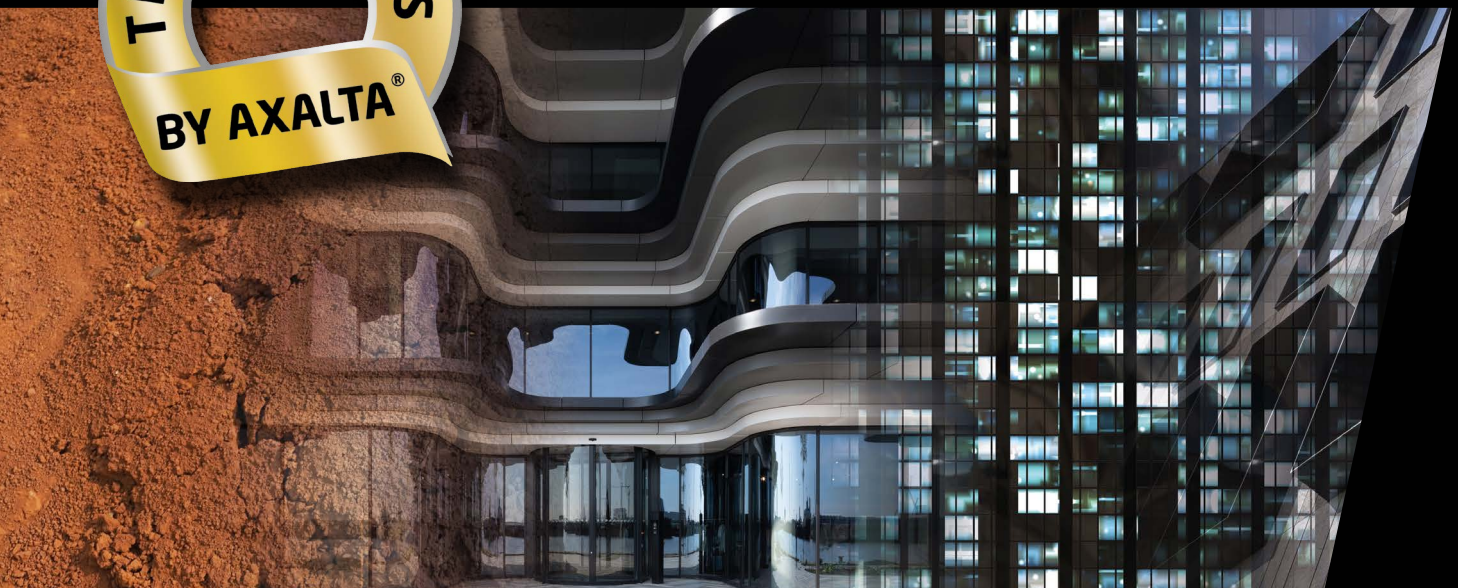




The Optimum Collection

Alesta® SD powder coatings

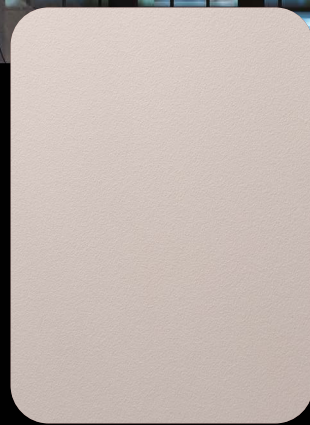


The Optimum Collection

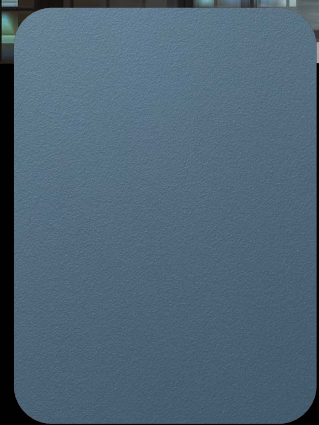
SuperDurable powder coatings

Alesta®'s fine textured finish was the original sandy textured powder coating available in an architectural quality on the market. The fine textured effect is highly valued in the architectural and design world due to its special, sophisticated look.

With The Optimum Collection, we take the original fine textured RAL-based finishes to the next level in quality. Optimum contains all the benefits of a fine textured finish in a super durable quality with excellent technical properties.

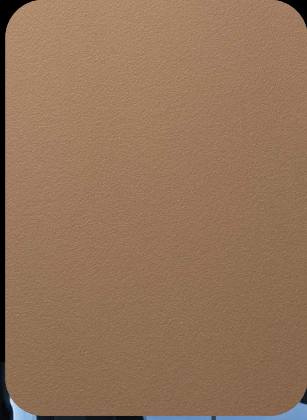


Signal White
SD130C9900320

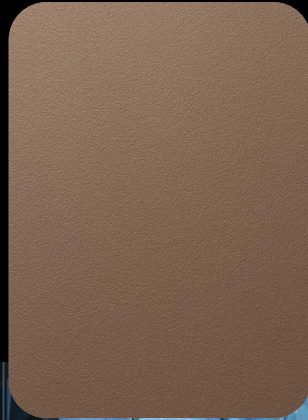


Pastel Blue
SD030C5502420

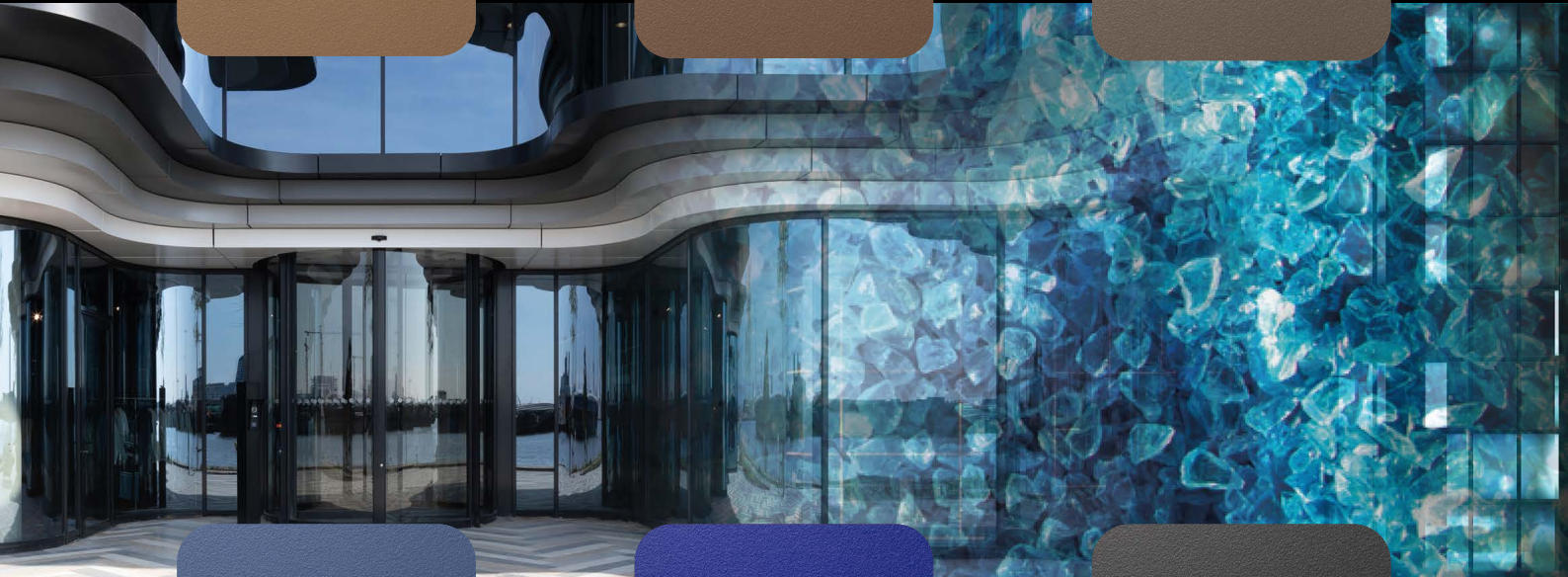
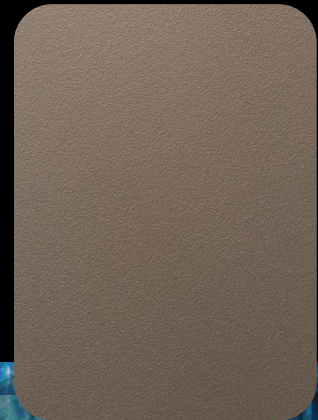
Grey Beige
SD030C1101920



Beige Grey
SD030C7700620



Quartz Grey
SD030C7703920



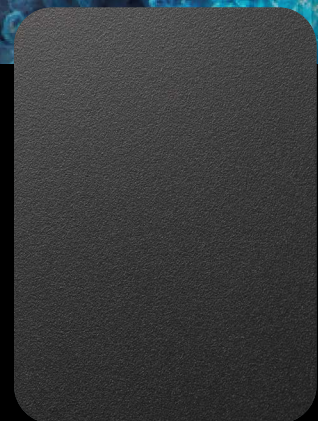
Distant Blue
SD030C5502320



Ultramarine Blue
SD030C5500220



Anthracite Grey
SD030C7000120



Fine

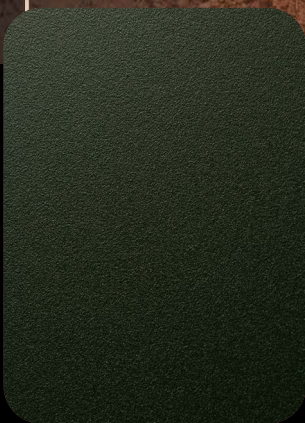
Clay Brown
SD030C8800320



Nut Brown
SD030C8801120



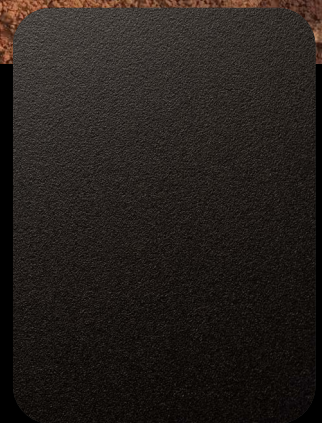
Grey Brown
SD030C8801920



Fir Green
SD030C6600920



Purple Red
SD030C3300420

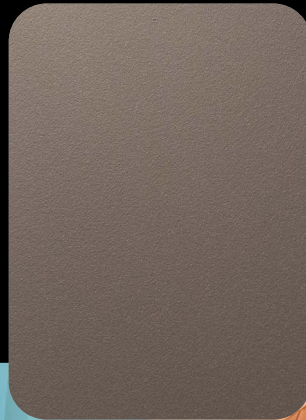


Jet Black
SD030C4000220

Textured

White Aluminium
SD031C7900620

Grey Aluminium
SD031C7900720



Highlights

- SuperDurable quality
- Excellent application properties
- Enhanced UV fastness
- Extra matt, fine textured finish
- Excellent batch-to-batch consistency
- Outstanding scratch-resistance
- Qualicoat Class 2 & GSB Florida 3 (Master) certified
- Meeting the AAMA2604 requirements
- 25 year warranty (under conditions)
- Available from stock

Alesta® SD and Alesta® AP products should never be combined in one project due the different weathering characteristics of both powder coating qualities.

EN The Optimum Collection is part of the Alesta® SD, SuperDurable powder coatings range for metal substrates. The products are formulated with super durable polyester resin technology and selected pigments, offering superior exterior durability with a fine textured finish.

Alesta® SD is ideal for buildings where aesthetic stability is essential and for any application in high UV level environments. The Optimum products have a better colour and gloss retention than standard quality products. Alesta® SuperDurable meets the requirements of Qualicoat Class 2, GSB Master, BS EN 12206 and AAMA 2604.

www.axalta.com/optimum

NL The Optimum Collection maakt deel uit van het Alesta® SD assortiment SuperDurable poederlakken voor metaalsubstraten. De producten zijn ontwikkeld met uiterst duurzame polyesterhars en speciale kleurstoffen, voor een superieure buitenduurzaamheid met een fijntextuur afwerking. Alesta® SD is ideaal voor gebouwen waar de nadruk ligt op het esthetische karakter en voor toepassingen in een omgeving met een intense blootstelling aan uv-straling. De Optimum lijn biedt in vergelijking met standaardproducten een optimaal kleur- en glansbehoud. Alesta® SuperDurable voldoet aan de Qualicoat klasse 2, de GSB Master, de BS EN 12206 en de AAMA 2604 specificaties.

www.axalta.be/optimum

ES La colección Optimum forma parte de la gama Alesta® SD de recubrimientos en polvo SuperDurable para sustratos metálicos. Los productos están formulados con tecnología de resina de poliéster muy duradera y pigmentos seleccionados, que brindan una durabilidad exterior superior con un acabado de textura fina. Alesta® SD es ideal para edificios donde la estabilidad estética es fundamental y para cualquier aplicación en entornos con altos niveles de rayos UV. Los productos Optimum conservan mejor el color y el brillo que los productos de calidad estándar. Alesta® SuperDurable cumple con los requisitos de Qualicoat Clase 2, GSB Master, BS EN 12206, y AAMA 2604.

www.axalta.es/optimum

SV Optimum-kollektionen är del av Alesta® SD-serien med SuperDurable-pulverbeläggningar för metallsubstrat. Produkterna tas fram med hjälp av en mycket hållbar polyesterhartsmetod och utvalda pigment så att man får suverän utvändigt hållbarhet med en prydligt texturerad ytbehandling. Alesta® SD är ett utmärkt alternativ för byggnader där estetisk stabilitet står i centrum och för användningsområden där det förekommer höga UV-nivåer. Optimum-produkterna har bättre färger och bevarar glansen bättre än produkter av standardkvalitet. Med Alesta® SuperDurable uppfyller du kraven enligt Qualicoat-klass 2, GSB Master, BS EN 12206 och AAMA 2604.

www.axalta.se/optimum

TR Optimum Koleksiyonu, Alesta® SD SuperDurable toz boya serisinin bir parçasıdır. Ürünlerin formülasyonunda kullanılan çok dayanıklı polyester reçine teknolojisi ve seçkin boya pigmentleri; metal yüzeylerde pürüzsüz bir yüzey ile üstün dış mekan dayanıklılığı sağlar. Alesta® SD estetik stabilitenin şart olduğu binalar ve yüksek UV seviyesine sahip ortamlardaki her uygulama için idealdir. Optimum ürünleri standart kalitede olan ürünlere göre daha iyi renk ve parlaklık koruma özelliğine sahiptir. Alesta® SuperDurable ürününü Qualicoat Class 2, GSB Master, BS EN 12206 ve AAMA 2604 şartlarını karşılamaktadır.

www.axalta.com.tr/optimum

FR La collection Optimum fait partie de l'offre des peintures en poudre Alesta® SD SuperDurable pour supports métalliques. Les produits sont formulés avec des résines polyester super durables et des pigments sélectionnés, offrant une durabilité extérieure supérieure dans une finition fine texturée.

Alesta® SD est idéal pour les bâtiments où la stabilité esthétique est essentielle et pour toutes les applications dans des environnements exposés à des rayonnements UV élevés. Les produits Optimum offrent une meilleure rétention de couleur et de brillance que les produits de qualité standard. Les peintures en poudre Alesta® SuperDurable sont homologuées Qualicoat Classe 2, GSB Master, BS EN 12206 et AAMA 2604.

www.axalta.fr/optimum

DE Die Optimum-Kollektion ist Teil der Alesta® SD Produktreihe von SuperDurable Pulverbeschichtungen für Metalluntergründe. Diese Feinstruktur Produkte werden unter Verwendung von extrem haltbaren Polyesterharzen und ausgewählten Pigmenten hergestellt und bieten eine hervorragende Witterungsbeständigkeit.

Alesta® SD ist ideal für Architekturprojekte, bei denen ästhetische Stabilität und hohe UV-Resistenz unerlässlich ist. Die Optimum-Produkte weisen im Vergleich mit Produkten in Standardqualität eine bessere Farbtonstabilität und Glanzerhaltung auf. Alesta® SuperDurable hat die Gütesiegel Qualicoat Klasse 2, GSB Master, entspricht BS EN 12206 und erfüllt die AAMA 2604 Anforderungen.

www.axalta.de/optimum

IT La Optimum Collection appartiene alla gamma Alesta® SD di vernici in polvere SuperDurable per substrati metallici. I prodotti sono formulati utilizzando la tecnologia in resina poliestere super resistente e pigmenti selezionati, che offrono una durata esterna superiore con una finitura a grana fine.

Alesta® SD è ideale per edifici in cui sia essenziale la stabilità a livello estetico e per qualsiasi applicazione in ambienti con livelli di raggi UV elevati. Nei prodotti Optimum, la tenuta di colore e lucentezza è maggiore rispetto ai prodotti di qualità standard. Alesta® SuperDurable soddisfa i requisiti Qualicoat Classe 2, GSB Master, BS EN 12206 e AAMA 2604.

www.axalta.it/optimum

CZ Optimum Collection je součástí řady práškových laků Alesta® SD SuperDurable na kovové podklady. Všechny produkty jsou vyrobeny technologií vysoce odolných polyesterových pryskyřic a vybraných pigmentů, které exteriérům dodávají špičkovou odolnost a povrch s jemnou texturou. Produkty Alesta® SD jsou ideální na budovy, kde je důležitá estetická stálost, a do prostředí s vysokou mírou UV záření. Produkty Optimum se vyznačují lepší retencí barev a lesku než produkty standardní kvality. Produkty Alesta® SuperDurable mají certifikaci Qualicoat třídy 2, GSB Master a splňují požadavky norem ČSN EN 12206 a AAMA 2604.

www.axalta.cz/optimum

PL Kolekcja Optimum jest częścią gamy farb proszkowych SuperDurable Alesta® SD do podłoży metalowych. Produkty o drobnostrukturalnym wykończeniu opracowano w oparciu o technologię wysoce wytrzymałej żywicy poliestrowej i wyselekcjonowane pigmenty, które zapewniają doskonałą wytrzymałość zewnętrzną.

Alesta® SuperDurable jest idealnym rozwiązaniem dla projektów budynków, w których istotna jest estetyczna stabilność i dla każdego zastosowania w środowisku o wysokim poziomie promieniowania UV. Produkty Optimum mają lepszą trwałość koloru i połysku w porównaniu z produktami o standardowej jakości. Alesta® SuperDurable spełnia wymagania Qualicoat Class 2, GSB Master, BS EN 12206 i AAMA 2604.

www.axalta.pl/optimum



Order your Optimum Collection sample panels
www.axaltacolourit.com

Austria, Greece, Central Europe

Tel: +43 22 36 50 00
powder-austria@axalta.com
www.axalta.at/pulver

Belgium, Luxembourg

Tel: +32 13 53 90 90
powdercoating@axalta.com
www.axalta.be/poederlakken

France

Tel: +33 4 77 96 70 00
alesta-info@axalta.com
www.axalta.fr/poudre

Germany

Tel: +49 87 03 93 18 10 63
contact-cs@axalta.com
www.axalta.de/pulver

Italy

Tel: +39 0 29 59 19 61
powdercoatings.italia@axalta.com
www.axalta.it/polvere

Spain, Portugal

Tel: +34 9 36 10 60 20 / 23
alesta.barcelona@axalta.com
www.axalta.es/polvo

Norway

Tel: +47 22 08 79 00
powder.norway@axalta.com
www.axalta.se/powdercoatings

Poland

Tel: +48 42 677 16 70
powder.poland@axalta.com
www.axalta.pl/farbyproszkowe

Sweden, Denmark, Finland

Tel: +46 49 06 62 00
powder.sweden@axalta.com
www.axalta.se/pulver

United Kingdom, Ireland

Tel: +44 13 25 34 70 00
powdersales@axalta.com
www.axalta.co.uk/powder

Turkey

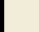

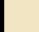
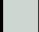














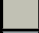




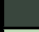




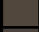






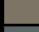







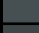
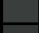
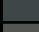













Tel: +90 262 674 00 00
powder.turkey@axalta.com
www.axalta.com.tr/tozboyalar

Middle East, North-Africa

Tel: +971 48217600
infome@axalta.com



The Optimum Collection RAL based colour overview

	RAL 1013	SD030C1101320		RAL 7032	SD030C7703220
	RAL 1015	SD030C1101520		RAL 7035	SD030C7703520
	RAL 1019	SD030C1101920		RAL 7036	SD030C7703620
	RAL 3004	SD030C3300420		RAL 7037	SD030C7703720
	RAL 3005	SD030C3300520		RAL 7038	SD030C7703820
	RAL 5002	SD030C5500220		RAL 7039	SD030C7703920
	RAL 5003	SD030C5500320		RAL 7040	SD030C7704020
	RAL 5010	SD030C5501020		RAL 7042	SD030C7704220
	RAL 5015	SD030C5501520		RAL 7043	SD030C7704320
	RAL 5023	SD030C5502320		RAL 7044	SD030C7704420
	RAL 5024	SD030C5502420		RAL 7045	SD030C7704520
	RAL 6005	SD030C6600520		RAL 7047	SD030C7704720
	RAL 6009	SD030C6600920		RAL 8003	SD030C8800320
	RAL 6019	SD030C6601920		RAL 8011	SD030C8801120
	RAL 6021	SD030C6602120		RAL 8014	SD030C8801420
	RAL 7001	SD030C7700120		RAL 8017	SD030C8801720
	RAL 7004	SD030C7700420		RAL 8019	SD030C8801920
	RAL 7005	SD030C7700520		RAL 8022	SD030C8802220
	RAL 7006	SD030C7700620		RAL 8028	SD030C8802820
	RAL 7011	SD030C7701120		RAL 9001	SD130C9900120
	RAL 7012	SD030C7701220		RAL 9002	SD130C9900220
	RAL 7015	SD030C7701520		RAL 9003	SD130C9900320
	RAL 7016	SD030C7000120		RAL 9004	SD030C4900420
	RAL 7021	SD030C7702120		RAL 9005	SD030C4000220
	RAL 7022	SD030C7702220		+/- RAL 9006	SD031C7900620
	RAL 7023	SD030C7702320		+/- RAL 9007	SD031C7900720
	RAL 7024	SD030C7702420		RAL 9010	SD130C9901020
	RAL 7026	SD030C7702620		RAL 9011	SD030C4901120
	RAL 7030	SD030C7703020		RAL 9016	SD130C9901620
	RAL 7031	SD030C7703120		RAL 9017	SD030C4901720